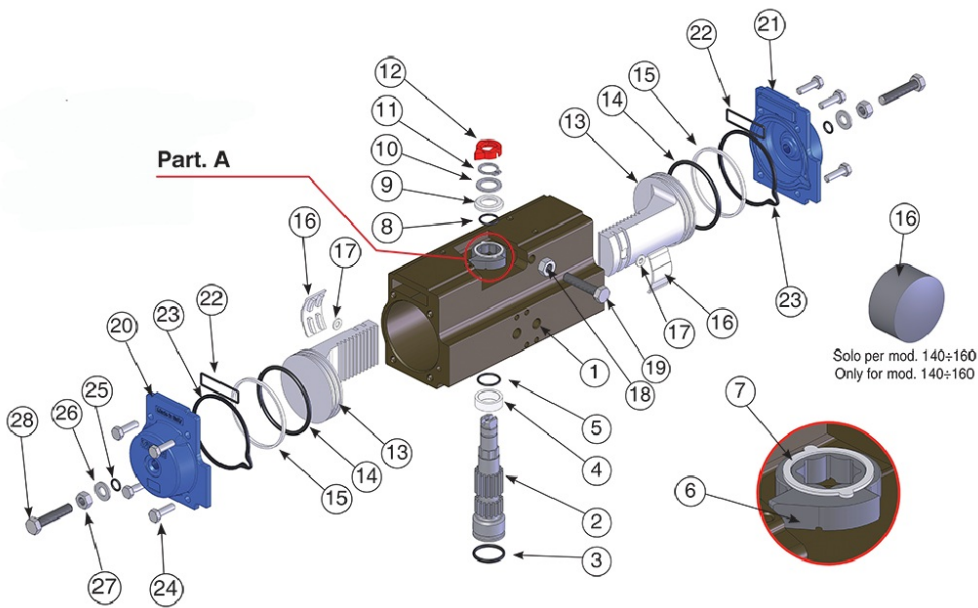
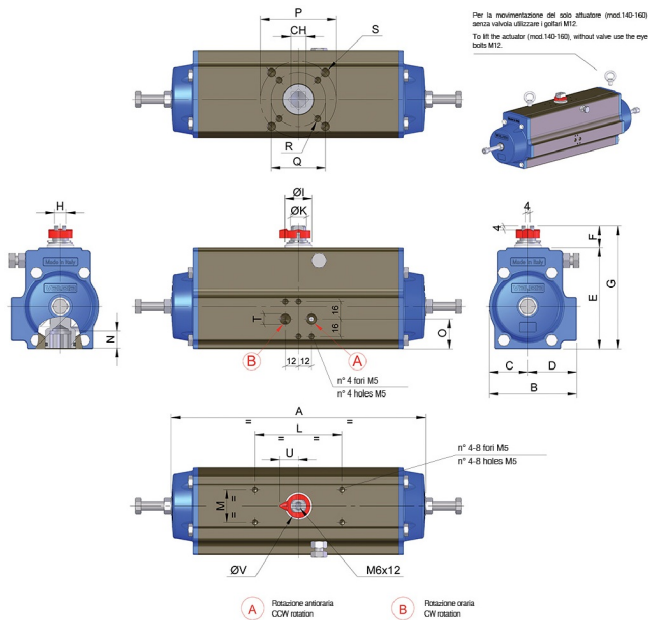


# MOD. 63



## Technical specifications





POSITION	PART NAME	MATERIAL	TREATMENT	N.° PIECES
1	Body	Extruded aluminium	Ossidato duro - Hard anodized	1
2	Anti-blowout pinion	Steel	Nichelato - Nickel plated	1
3*	O-ring	FKM (VITON)	-	1
4*	Spacer ring	POM	-	1
5*	O-ring	FKM (VITON)	-	1
6	Cam	Stainless steel	-	1
7	Spacer	POM	-	1
8*	O-ring	FKM (VITON)	-	1
9*	Spacer	POM	-	1
10	Washer	Stainless steel	-	1
11**	Snap ring	Steel	Nichelato - Nickel plated	1
12	Position indicator	Thermoplastic rubber TPE	-	1
13	Piston	Die cast aluminium	-	2
14*	O-ring	FKM (VITON)	-	2
15*	Antifriction ring	POM	-	2
16*	Thrust block	POM	-	2 [4]
17	Washer	Stainless steel	-	2 [0]
18	Stop bolt retaining nut	Stainless steel	-	1
19	Stop bolt	Stainless steel	-	1
20	Left end cap	Die cast aluminium	Verniciato - Painted	1
21	Right end cap	Die cast aluminium	Verniciato - Painted	1
22	O-ring	FKM (VITON)	-	2
23	End cap seats	FKM (VITON)	-	2
24	End cap fixing screw	Stainless steel	-	8
25*	O-ring	FKM (VITON)	-	2
26	Washer	Stainless steel	-	2
27	Stop bolt retaining nut	Stainless steel	-	2
28	Stop bolt	Stainless steel	-	2

SIZE	PATTERN ISO 5211	CH	A	B	C	D	E	F	G	H	ØI	ØK	L	M	N	O	P	Q	R	S	T BSPT	U	ØV
63	F05 - F07	14	9.17	3.17	1.40	1.77	3.66	0.79	4.45	0.43	0.98	0.59	3.15	1.18	0.63	1.08	2.76	1.97	M6X8	M8x12	1/8"	0.67	0.87

\*Parts subject to wear

\*\* Reinforced series DIN 471-UNI7436

(4) (0) valid for mod. 140-160 only.

The length of the adjustment bolts changes according to the angle of rotation needed.

