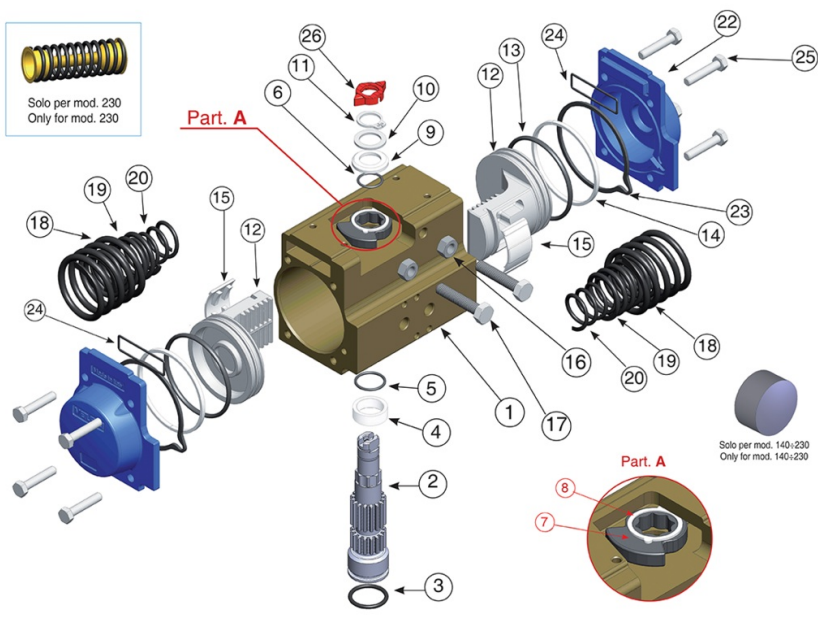
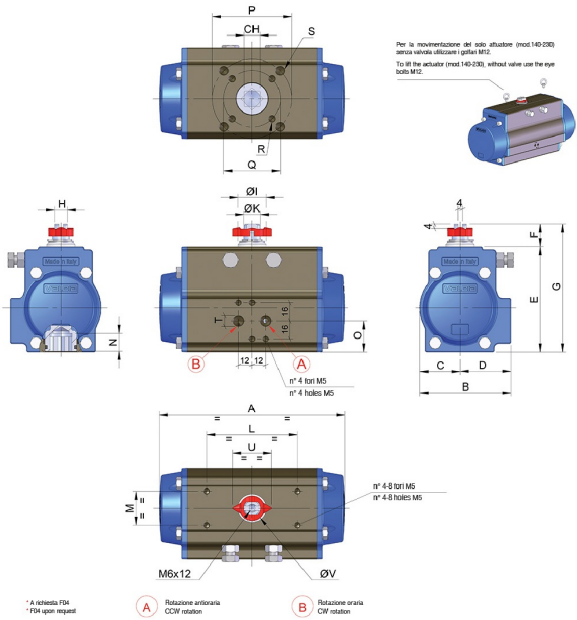


# MOD. 85



## Technical specifications





| POSITION | PART NAME                   | MATERIAL  | TREATMENT                     | N.° PIECES |
|----------|-----------------------------|---|-------------------------------|------------|
| 1        | Body                        | Extruded aluminium                              | Ossidato duro - Hard anodized | 1          |
| 2        | Anti-blowout pinion         | Steel   | Nichelato - Nickel plated     | 1          |
| 3*       | O-ring                      | FKM (VITON)                                     | -                             | 1          |
| 4*       | Spacer ring                 | POM   | -                             | 1          |
| 5*       | O-ring                      | FKM (VITON)                                     | -                             | 1          |
| 6*       | O-ring                      | FKM (VITON)                                     | -                             | 1          |
| 7        | Cam                         | Stainless steel                                 | -                             | 1          |
| 8        | Spacer                      | POM   | -                             | 1          |
| 9*       | Anello sotto seeger -Spacer | POM   | -                             | 1          |
| 10       | Washer                      | Stainless steel                                 | -                             | 1          |
| 11**     | Snap ring                   | Steel   | Nichelato - Nickel plated     | 1          |
| 12       | Piston                      | Die cast aluminium                              | -                             | 2          |
| 13*      | O-ring                      | FKM (VITON)                                     | -                             | 2          |
| 14*      | Antifriction ring           | POM   | -                             | 2          |
| 15*      | Thrust block                | POM   | -                             | 2 [4]      |
| 16       | Stop bolt retaining nut     | Stainless steel                                 | -                             | 2          |
| 17       | Stop bolt                   | Stainless steel                                 | -                             | 2          |
| 18       | External spring             | Steel   | Verniciata - Painted          | -          |
| 19***    | Central spring              | Steel   | Verniciata - Painted          | -          |
| 20       | Internal spring             | Steel   | Verniciata - Painted          | -          |
| 21       | Left end cap                | Die cast aluminium                              | Verniciato - Painted          | 1          |
| 22       | Right end cap               | Die cast aluminium                              | Verniciato - Painted          | 1          |
| 23       | End cap seats               | FKM (VITON)                                     | -                             | 2          |
| 24       | O-ring                      | FKM (VITON)                                     | -                             | 2          |
| 25       | End cap fixing screw        | Stainless steel                                 | -                             | 8          |
| 26       | Position indicator          | Gomma termoplastica TPEThermoplastic rubber TPE | -                             | 1          |

\* Parts subject to wear. (4) valid for mod. 140-160-180-200-230 only.

\*\* Reinforced sries DIN 471-UNI 7436

\*\*\* Only for mod. 160-180-200

| SIZE | PATTERN ISO 5211 | CH | A    | B    | C    | D    | E    | F    | G    | H    | ØI   | ØK   | L    | M    | N    | O    | P    | Q    | R                      | S                      | T<br>NPT | U    | ØV   |
|------|------------------|----|------|------|------|------|------|------|------|------|------|------|------|------|------|------|------|------|------------------------|------------------------|----------|------|------|
| 85   | F05 - F07        | 17 | 9.47 | 4.17 | 1.87 | 2.30 | 4.92 | 0.79 | 5.71 | 0.59 | 1.38 | 0.86 | 3.15 | 1.18 | 0.75 | 1.65 | 2.76 | 1.97 | 1/4-20 UNC<br>2Bx0.31" | 5/16-18 UNC<br>2Bx0.47 | 1/8"     | 1.65 | 1.14 |