



JOB NAME:	CONTRACTOR:
JOB LOCATION:	APPROVAL:
ENGINEER:	CONTRACTOR P.O.:
APPROVAL:	REPRESENTATIVE:

## DA700

**L700 GROOVED END EPOXY-COATED DUCTILE IRON BODY, EPDM SEATS WITH DOUBLE ACTING PNEUMATIC ACTUATOR**

**SIZES 2" TO 12"**

## SR700

**L700 RUBBER-LINED DIRECT MOUNT, WAFER STYLE BUTTERFLY VALVE WITH EPDM SEATS AND SS DISC W SPRING RETURN PNEUMATIC ACTUATOR**

**SIZES 2" TO 12"**

## SPECIFICATIONS

The Bonomi DA700E/SR700E series pneumatic actuated package features the L700 ISO 5211 direct mount epoxy coated, ductile iron, EPDM coated disc, grooved end butterfly valve.

The Valbia pneumatic actuator comes with a hard-anodized aluminum body, and powder coated end caps. In addition, all Valbia pneumatic actuators are standardly furnished with elevated temperature seals to 302°F. The patented side loaded limit stops never enter the piston chamber eliminating extra possible leak paths.

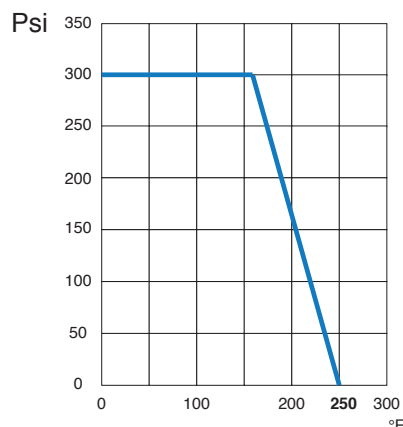
## ACTUATOR FEATURES

- Hard anodized extruded aluminum body
- Concentric spring sets
- Die cast aluminum end caps
- Solid steel barstock pinion (not casting)
- 0°-90° rotation adjustment cam
- 0°-90° rotation adjustment bolts
- POM piston guides
- Minimum air pressure rating: 80 psi
- Maximum air pressure rating: 116 psi
- Working temperature: -4°F - 302°F
- No lubrication maintenance required for the entire actuator lifetime
- 100% factory tested

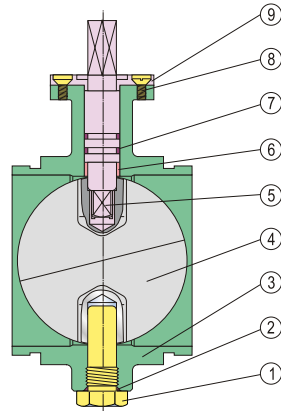
## VALVE FEATURES

- Grooved End Epoxy-coated Ductile Iron body
- Sizes 2" to 12"
- ISO 5211 Direct Mount/Square Stem
- Epoxy coated Ductile Iron Wafer body
- Temperature Range: -30°F to 250°F
- EPDM seat
- Face to face MSS-SP-67
- Ends meet ANSI AWWA C606

## PRESSURE TEMPERATURE CHART FOR L700

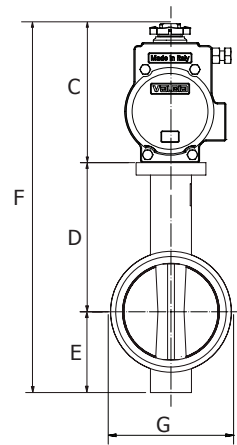
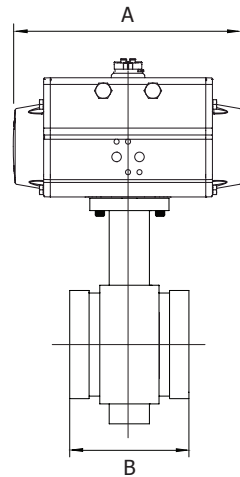


## BILL OF MATERIALS FOR L700



N POS	PART NAME	MATERIAL	N PCS
1	LOWER SHAFT	410 STAINLESS STEEL	1
2	SEAT	EPDM (-30°F TO 250°F)	1
3	BODY	CAST IRON / DUCTILE IRON	1
4	DISC	DUCTILE IRON + NBR/EPDM	1
5	UPPER SHAFT	410 STAINLESS STEEL	1
6	BUSHING	P.T.F.E.	1
7	O-RING	EPDM (-30°F TO 250°F)	1
8	SCREW	CARBON STEEL ZINC PLATED	1
9	COVER	CARBON STEEL NICKEL PLATED	1

## DIMENSIONS



### DA700

WITH DOUBLE ACTING ACTUATOR

SIZE	A	B	C	D	E	F	G	ACT.
2"	5.55	3.24	4.00	3.94	2.76	10.70	2.37	DA52V
2-1/2"	6.46	3.81	4.45	4.17	2.95	11.57	2.87	DA63V
3"	8.27	3.81	5.16	4.43	3.23	12.82	3.50	DA75V
4"	8.27	4.57	5.16	5.31	3.94	14.41	4.50	DA75V
5"	9.47	5.81	5.71	5.85	4.69	16.25	5.56	DA85V
6"	10.83	5.81	6.21	6.93	5.12	18.26	6.63	DA100V
8"	14.65	5.25	8.05	8.03	6.38	22.46	8.63	DA125V
10"	17.13	6.25	8.94	8.98	7.87	25.79	10.75	DA140V
12"	19.69	6.44	9.88	10.48	8.82	29.18	12.75	DA160V

### SR700

WITH SPRING RETURN ACTUATOR

SIZE	A	B	C	D	E	F	G	ACT.
2"	8.27	3.24	5.16	3.94	2.76	14.26	2.37	SR75V
2-1/2"	9.47	3.81	5.71	4.17	2.95	15.59	2.87	SR85V
3"	13.11	3.81	7.57	4.43	3.23	19.57	3.50	SR115V
4"	13.11	4.57	7.57	5.31	3.94	20.45	4.50	SR115V
5"	14.65	5.81	8.05	5.85	4.69	21.95	5.56	SR125V
6"	14.65	5.81	8.05	6.93	5.12	23.03	6.63	SR125V
8"	19.69	5.25	9.88	8.03	6.38	27.79	8.63	SR160V
10"	22.76	6.25	12.13	8.98	7.87	33.24	10.75	SR200V
12"	27.17	6.44	13.98	10.48	8.82	38.44	12.75	SR230V