



JOB NAME:	CONTRACTOR:
JOB LOCATION:	APPROVAL:
ENGINEER:	CONTRACTOR P.O.:
APPROVAL:	REPRESENTATIVE:

ME97T
T-PORT

ME97L
L-PORT

ME97X
DOUBLE L-PORT

97 SERIES 3-WAY STAINLESS STEEL, BLOCK BODY, FULL PORT BALL VALVE WITH VALBIA METAL ELECTRIC ACTUATOR

SIZES 1/2" TO 4"

*001	12V AC/DC	*002	24V AC/DC	*003	100-240V AC
01	BATTERY BACKUP	*02*	POSITIONER	*04*	BATTERY BACKUP W POSITIONER

SPECIFICATIONS

The Bonomi ME97T, ME97L and ME97X series electric packages feature a block style full port, stainless steel, direct mount style, ball valve, with versatile T port, L port, and double L port configurations.

The Valbia electric VBM metal housing actuator fits directly over the 97-series square stem and ISO 5211 pad. The actuator also is standardly furnished with dual voltages, two extra limit switches, torque limiter, manual override, a dome position indicator, 1/2" conduit connections, 75% duty cycle motor, contained in a NEMA 4 cast aluminum powder coated housing.

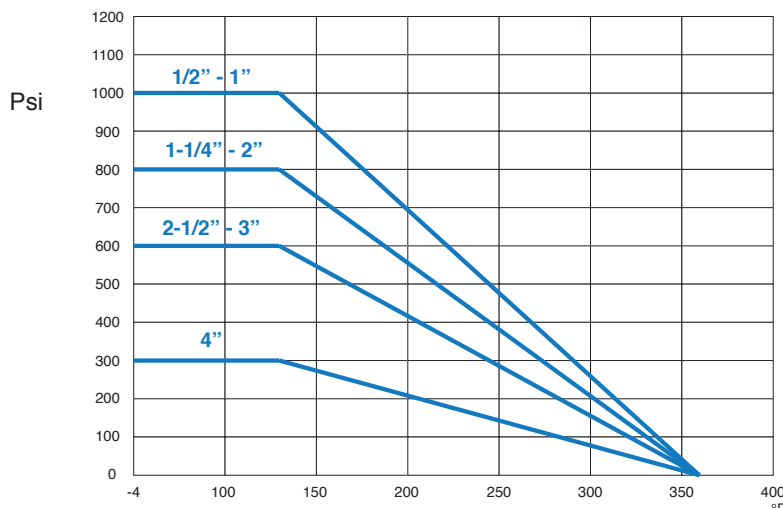
ACTUATOR FEATURES

- Dual Voltages
- CSA, UL approved
- 24V AC/DC and 100-240V AC
- ISO 5211 dual patterns
- 75% Duty Cycle
- High-Strength, Die Cast Aluminum Powder Coated Housing
- Temperature Range -4°F to 131°F
- NEMA 4 Housing
- Two Auxiliary Switches Standard
- Torque limiter standard
- 1/2" Conduit connections

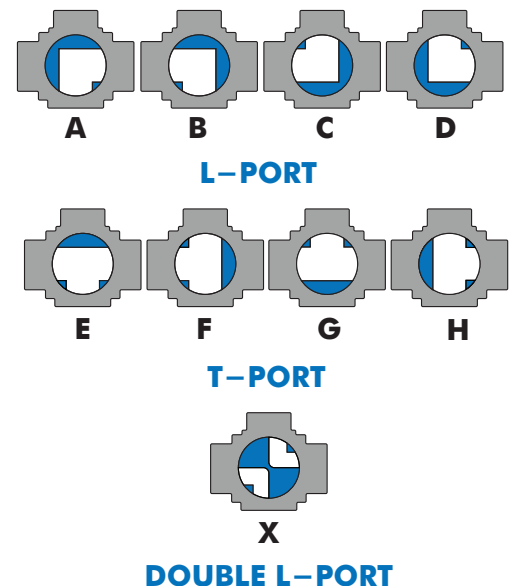
VALVE FEATURES

- Stainless Steel CF8M block body
- Full port, sizes 1/2" to 4"
- Pressure rating 1/2" to 1" - 1000 psi, 1-1/4" to 2" - 800 psi, 2-1/2" to 3" - 600 psi, 4" - 300 psi
- Temperature range -20°F to 450°F
- Blow-out proof stem
- R.P.T.F.E. seats & seals
- Grounded Ball & Stem
- 100% tested
- All stainless steel external components
- ISO 5211 mounting pad with square stem

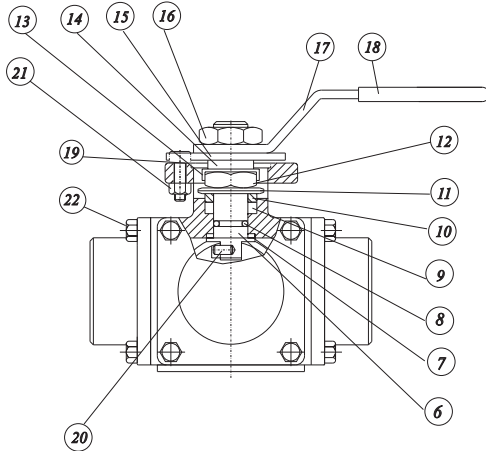
PRESSURE - TEMPERATURE CHART FOR SERIES 97T/97L/97X



PORT CONFIGURATIONS



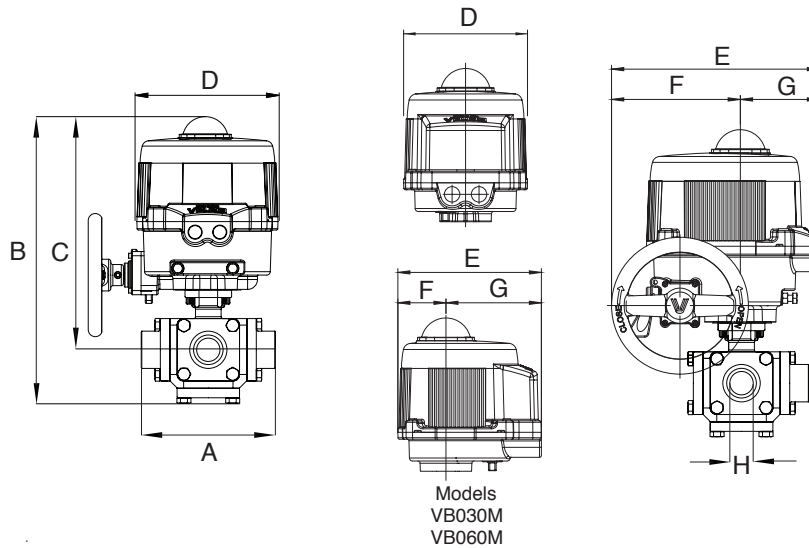
BILL OF MATERIALS FOR 97T/97L/97X



N POS	PART NAME	MATERIAL	N PCS
1	END CAPS	A351 CF8M	3
2	GASKET	P.T.F.E.	4
3	BODY	A351 CF8M	1
4	BALL	SS 316	1
5	BALL SEATS	Carbon Filled P.T.F.E.	4
6	THRUST WASHER	R.P.T.F.E.	1
7	STEM	SS 316	1
8	O-RING	FKM (Viton®)	1
9	STEM PACKING	P.T.F.E.	1
10	GLAND	SS 304	2
11	DISC WASHER	SS 301	1

N POS	PART NAME	MATERIAL	N PCS
12	STEM NUT	SS 304	1
13	NUT STOP	SS 304	1
14	SPACE WASHER	SS 304	1
15	STOPPER PLATE	SS 304	1
16	HANDLE NUT	SS 304	1
17	HANDLE	SS 304	1
18	HANDLE SLEEVE	VINYL	1
19	INSERT PIN	SS 304	1
20	STOP PIN	SS 316	1
21	STOP PIN NUT	SS 304	1
22	BOLTS	SS 304	8

DIMENSIONS

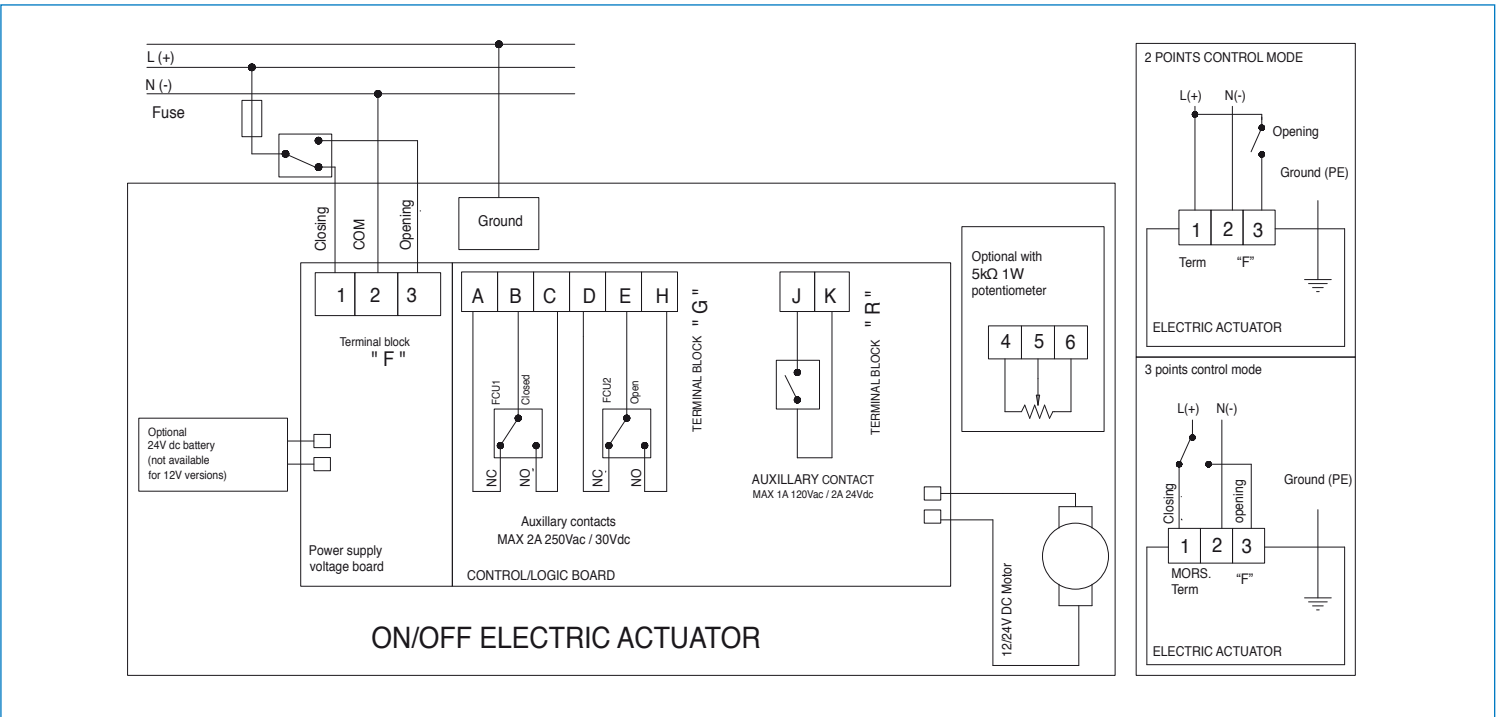


Size	A	B	C	D	E	F	G	H	Act.
1/2"	3.62	9.55	10.93	6.34	7.36	2.48	4.88	0.59	VB030M
3/4"	4.33	9.96	11.74	6.34	7.36	2.48	4.88	0.79	VB030M
1"	5.66	11.18	13.41	6.93	7.76	2.48	5.28	0.98	VB060M
1-1/4"	5.78	11.75	14.10	6.93	7.76	2.48	5.28	1.25	VB060M
1-1/2"	6.45	13.41	16.25	10.63	10.47	6.50	3.98	1.5	VB060M
2"	7.24	13.67	16.83	10.63	10.47	6.50	3.98	1.97	VB060M
2-1/2"	8.97	14.4	18.21	10.63	10.47	6.50	3.98	2.44	VB190M *
3"	10.43	14.95	19.08	10.83	10.98	7.24	3.74	2.99	VB190M *
4"	12.48	16.17	21.34	10.83	10.98	7.24	3.74	3.78	VB270M *

* Includes Manual Handwheel

ON/OFF WIRING DIAGRAM - VB030M - VB350M

12V AC/DC, 24V AC/DC & 100-240VAC



POSITIONER WIRING DIAGRAM - VB030M - VB350M

12V AC/DC, 24V AC/DC & 100-240VAC

