



JOB NAME:	CONTRACTOR:
JOB LOCATION:	APPROVAL:
ENGINEER:	CONTRACTOR P.O.:
APPROVAL:	REPRESENTATIVE:

## M8E724101-00\*

**724101 2-WAY CARBON STEEL, ANSI 150 FLANGED, DIRECT MOUNT WAFER STYLE, FULL PORT BALL VALVE WITH VALBIA METAL ELECTRIC ACTUATOR**

**SIZES 1" TO 4"**

*001	12V AC/DC	*002	24V AC/DC	*003	100-240V AC
*01*	BATTERY BACKUP	*02*	POSITIONER	*04*	BATTERY BACKUP W POSITIONER

### SPECIFICATIONS

The M8E724101 electric actuated package features the ANSI Class 150 full port carbon steel space saving, 724101 series direct mount, low torque, wafer style ball valve. This ball valve series feature a double O-ring stem seal, grounded ball & stem, and incorporates an ISO 5211 mounting pad and square stem. Sizes are 1"-4".

The Valbia VBM series metal actuator housing is made from die cast aluminum, and standardly features dual voltages, two extra limit switches, a heater & thermostat, a torque limiter, dual ISO patterns, female star drive, a high-profile dome position indicator, 1/2" conduit connections, and a 75% duty cycle motor. The actuator is NEMA 4 rated. Options include positioning boards, battery backups, or a combination of the two.

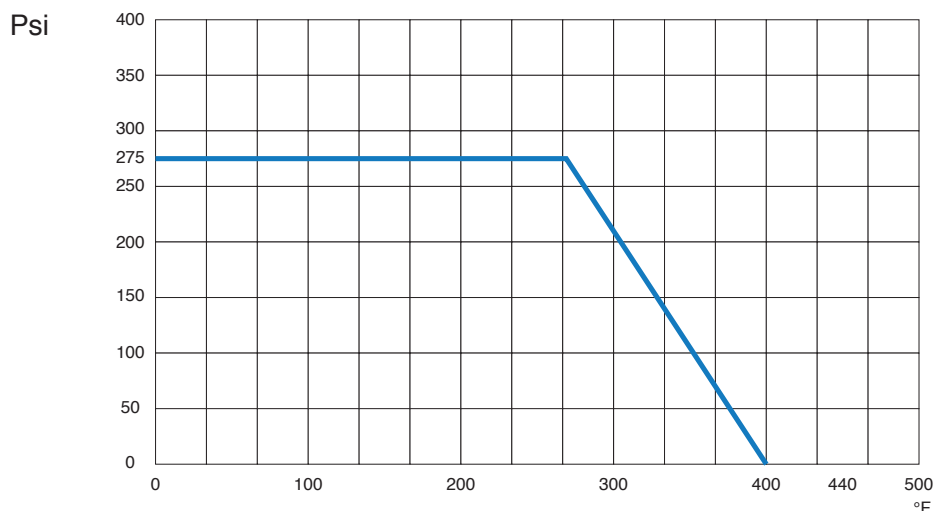
### ACTUATOR FEATURES

- Dual Voltages
- CSA, UL approved
- 24V AC/DC and 100-240V AC
- ISO 5211 dual patterns
- 75% Duty Cycle
- High-Strength, Die Cast Aluminum Powder Coated Housing
- Temperature Range -4°F to 131°F
- NEMA 4 Housing
- Two Auxiliary Switches Standard
- Torque limiter standard
- 1/2" Conduit connections

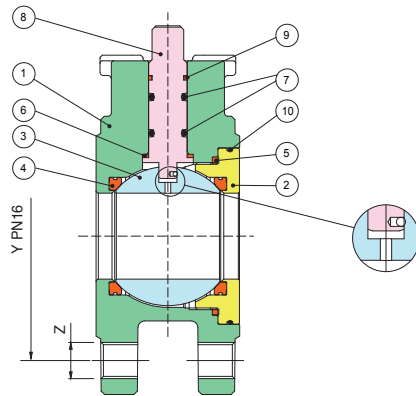
### VALVE FEATURES

- Direct mount, Carbon steel ANSI class 150 Wafer-style flanged ball valve
- Full port, sizes 1" to 4"
- Temperature range -4°F to +366°F
- Anti-static Stem Device
- Dual Stem Seal O-rings FKM (Viton)
- TFM Stem Seal
- ISO 5211 mounting pad/square stem
- Low Torque Design
- TFM Encapsulated Flex Seat Design
- 17-4 PH stem

### PRESSURE - TEMPERATURE CHART FOR SERIES 724101

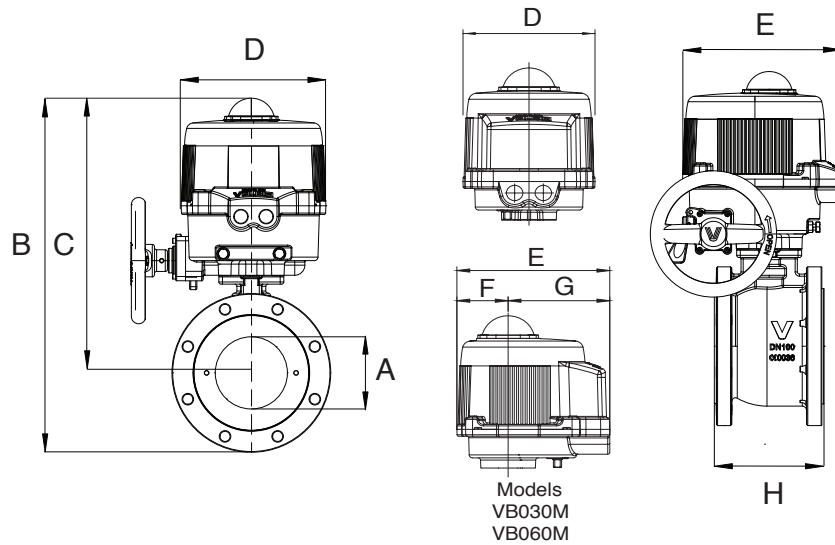


## BILL OF MATERIALS FOR 724101



N POS	PART NAME	MATERIAL	N PCS
1	BODY	A352-LCB	1
2	END CONNECTION	ASTM A105	1
3	BALL	A351-CF8/A182-F304	1
4	BALL SEAL	TFM®	2
5	BODY SEAT	P.T.F.E.	1
6	THRUST WASHER	TFM®	1
7	O-RING	FKM (Viton®)	2
8	STEM	A564-Tr630 H1150D (17-4-PH)	1
9	STEM SEAL	P.T.F.E.	1
10	O-RING	FKM (Viton®)	1

## DIMENSIONS

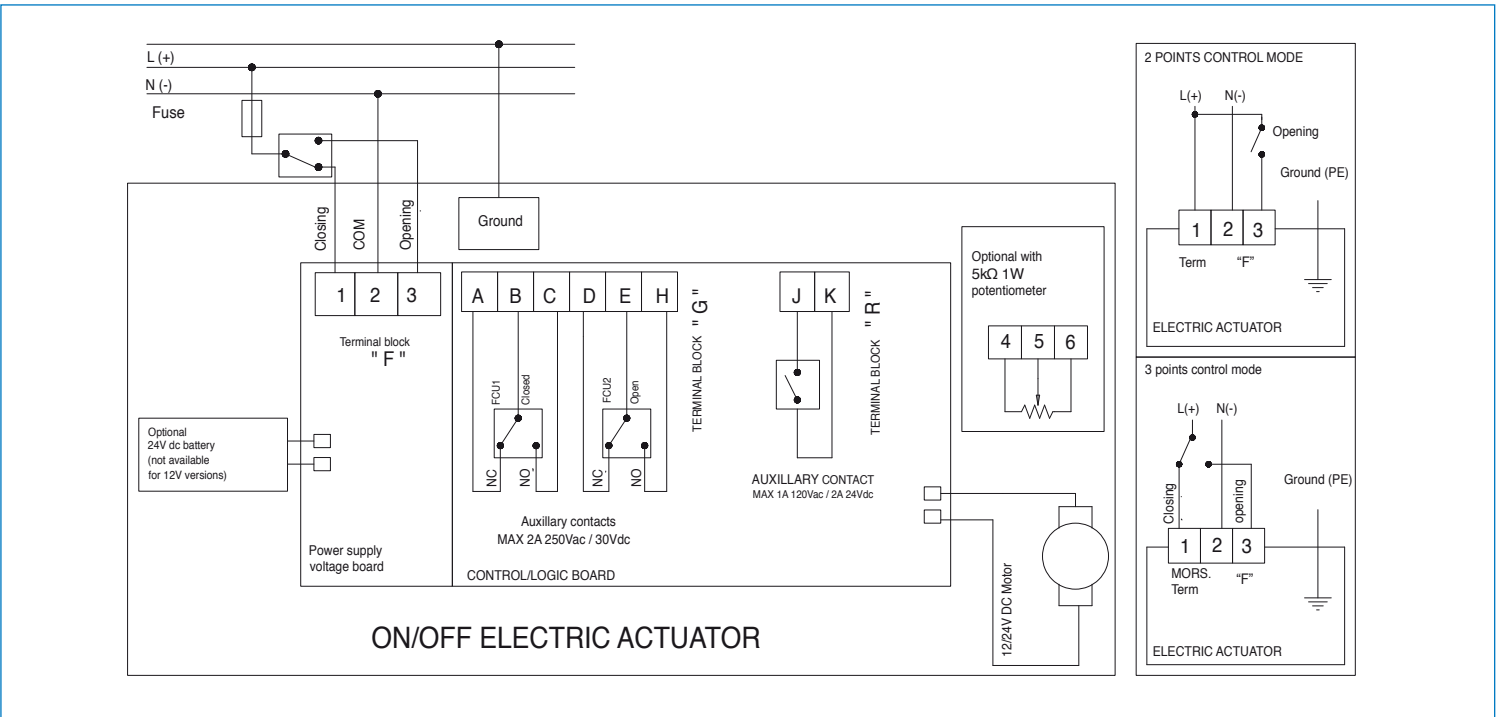


Size	A	B	C	D	E	F	G	H	ACT.
1"	1.00	12.49	10.16	7.83	7.36	2.48	4.88	1.89	VB030M
1-1/4"	1.25	13.51	10.67	7.83	7.36	2.48	4.88	2.13	VB030M
1-1/2"	1.50	14.13	10.98	7.83	7.36	2.48	4.88	2.50	VB030M
2"	2.00	14.77	11.30	7.83	7.36	2.48	4.88	3.23	VB030M
2-1/2"	2.50	17.32	12.99	8.66	7.76	2.48	5.28	4.06	VB060M
3"	3.00	18.10	13.38	8.66	7.76	2.48	5.28	4.80	VB060M
4"	4.00	20.26	14.97	8.66	7.76	6.50	3.98	5.98	VB110M *

\* Includes Manual Handwheel

# ON/OFF WIRING DIAGRAM - VB030M - VB110M

12V AC/DC, 24V AC/DC & 100-240VAC



# POSITIONER WIRING DIAGRAM - VB030M - VB110M

12V AC/DC, 24V AC/DC & 100-240VAC

