



|                      |                         |
|----------------------|-------------------------|
| <b>JOB NAME:</b>     | <b>CONTRACTOR:</b>      |
| <b>JOB LOCATION:</b> | <b>APPROVAL:</b>        |
| <b>ENGINEER:</b>     | <b>CONTRACTOR P.O.:</b> |
| <b>APPROVAL:</b>     | <b>REPRESENTATIVE:</b>  |

## M8E085-00\*

**762000 2-WAY CARBON STEEL, ANSI 150 FLANGED, SPLIT BODY STYLE, FULL PORT BALL VALVE WITH VALBIA METAL ELECTRIC ACTUATOR AND BRACKET**

**SIZES 1/2" TO 8"**

|                            |                        |   |
|----------------------------|------------------------|---|
| <b>*001</b> 12V AC/DC      | <b>*002</b> 24V AC/DC  | <b>*003</b> 100-240V AC                 |
| <b>*01*</b> BATTERY BACKUP | <b>*02*</b> POSITIONER | <b>*04*</b> BATTERY BACKUP W POSITIONER |

### SPECIFICATIONS

The M8E085 series electric actuator assembled package features the 762000 series Class 150, full port, carbon steel split body, ISO 5211 pad, double D stem, flanged ball valve. This valve is designed to ANSI 16.5, ANSI 16.10, and ANSI 16.34. It is also certified to API 607, 4th edition, API 6FA, and meets NACE MR 0175 and NACE MR 0103.

The Valbia VBM series metal actuator housing is made from die cast aluminum, and standardly features dual voltages, two extra limit switches, a heater and thermostat, a torque limiter, dual ISO patterns, female star drive, a high-profile dome inductor, 1/2" conduit connections, and a 75% duty cycle motor. The actuator is NEMA 4 rated, and options include positioning boards, battery back-ups, or a combination of the two.

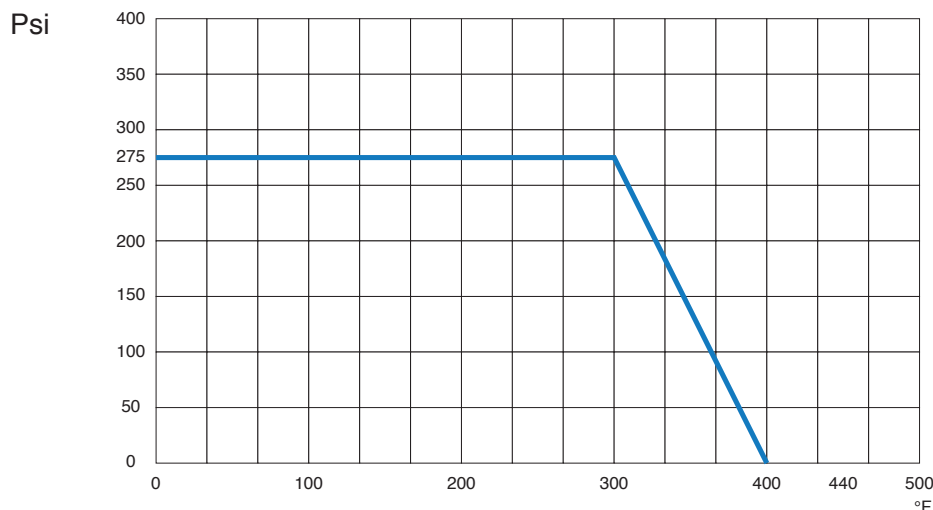
### ACTUATOR FEATURES

- Dual Voltages
- CSA, UL approved
- 24V AC/DC and 100-240V AC
- ISO 5211 dual patterns
- 75% Duty Cycle
- High-Strength, Die Cast Aluminum Powder Coated Housing
- Temperature Range -4°F to 131°F
- NEMA 4 Housing
- Two Auxiliary Switches Standard
- VB110M through VB350M includes manual override handwheel
- EA575 includes manual override handwheel
- Torque limiter standard
- 1/2" Conduit connections

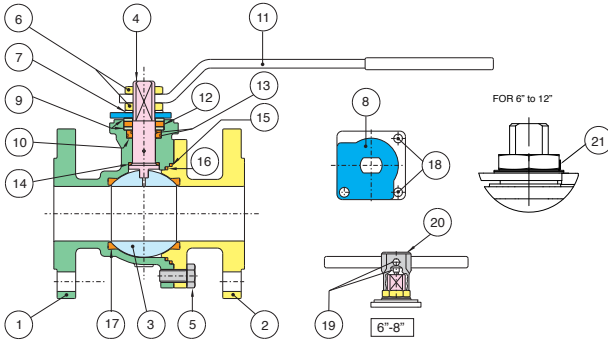
### VALVE FEATURES

- Carbon Steel, ANSI class 150 flanged
- Full port, sizes 1/2" to 8"
- Temperature range -4°F to 400°F
- Blow-out proof stem, adjustable stem packing
- P.T.F.E. seats, packing and thrust washer
- 100% tested
- PED 97/23/CE
- ANSI B16.5, B16.10, B16.34 design
- Fire Safe API 6FA-API 607 4th edition
- Antistatic Device
- ISO 5211 mounting pad with double "D" stem

### PRESSURE - TEMPERATURE CHART FOR SERIES 762000



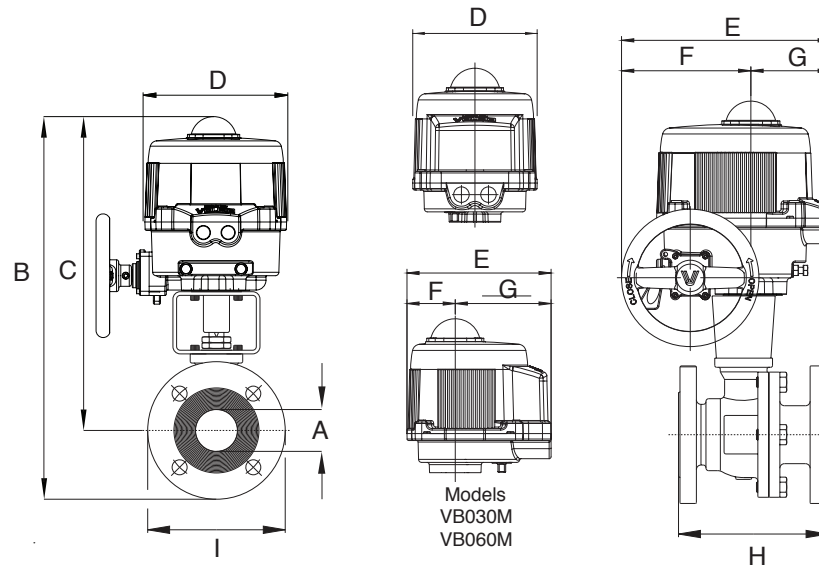
## BILL OF MATERIALS FOR 762000



| N POS | PART NAME      | MATERIAL           | N PCS  |
|-------|----------------|--------------------|--------|
| 1     | BODY           | A216 WCB           | 1      |
| 2     | END CONNECTION | A216 WCB           | 1      |
| 3     | BALL           | A479-304/A351 CF8M | 1      |
| 4     | STEM           | A479-304           | 1      |
| 5     | SCREW          | STAINLESS STEEL    | 4-8-12 |
| 6     | NUT            | STAINLESS STEEL    | 1-2    |
| 7     | SPRING WASHER  | STEEL              | 2      |
| 8     | TRAVEL STOP    | STEEL              | 1      |
| 9     | PACKING GLAND  | STEEL              | 2      |
| 10    | STEM SEAL      | P.T.F.E.           | 1      |
| 11    | HANDLE         | STEEL              | 1      |

| N POS | PART NAME         | MATERIAL     | N PCS |
|-------|-------------------|--------------|-------|
| 12    | STEM SEAL         | GRAPHOIL     | 1     |
| 13    | O-RING            | FKM (Viton®) | 2     |
| 14    | THRUST WASHER     | P.T.F.E.     | 1     |
| 15    | SEAL              | GRAPHOIL     | 1     |
| 16    | SEAL              | P.T.F.E.     | 1     |
| 17    | BALL SEATS        | P.T.F.E.     | 2     |
| 18    | SCREW             | STEEL        | 2     |
| 19    | SCREW             | STEEL        | 2     |
| 20    | BODY HANDLE       | CAST IRON    | 1     |
| 21    | UNSCREWING GROWER | A182-F316    | 1     |

## DIMENSIONS

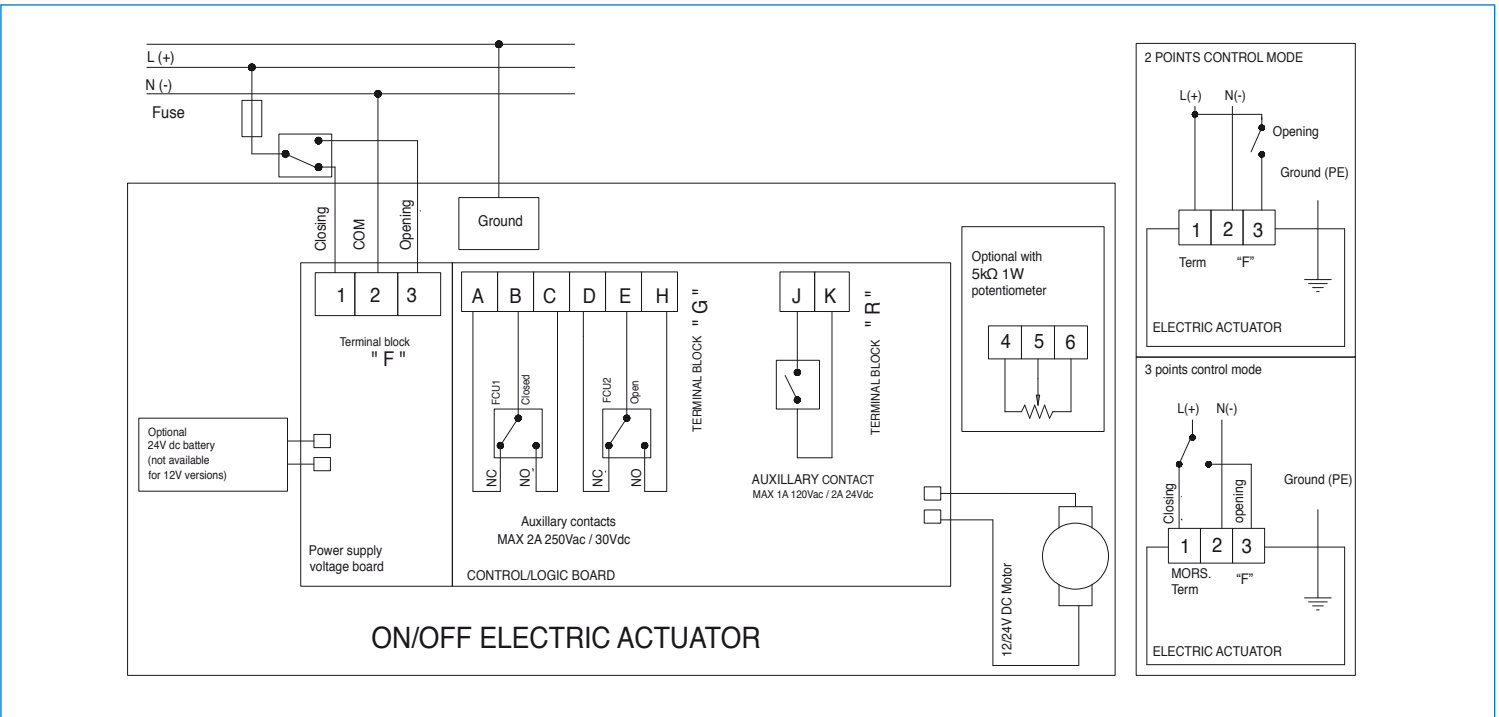


| Size   | A    | B     | C     | D     | E     | F    | G    | H     | I     | Act.     |
|--------|------|-------|-------|-------|-------|------|------|-------|-------|----------|
| 1/2"   | 0.50 | 11.52 | 9.96  | 6.34  | 7.36  | 2.48 | 4.88 | 4.25  | 3.50  | VB030M   |
| 3/4"   | 0.75 | 11.93 | 10.19 | 6.34  | 7.36  | 2.48 | 4.88 | 4.62  | 3.88  | VB030M   |
| 1"     | 0.98 | 12.78 | 10.66 | 6.34  | 7.36  | 2.48 | 4.88 | 5.00  | 4.25  | VB030M   |
| 1-1/2" | 1.50 | 16.64 | 13.05 | 6.93  | 7.76  | 2.48 | 5.28 | 6.50  | 5.00  | VB060M   |
| 2"     | 1.97 | 17.40 | 13.46 | 6.93  | 7.76  | 2.48 | 5.28 | 7.00  | 6.00  | VB060M   |
| 3"     | 3.00 | 22.63 | 17.53 | 10.63 | 10.47 | 6.50 | 3.98 | 8.00  | 7.50  | VB110M * |
| 4"     | 3.94 | 24.27 | 18.50 | 10.63 | 10.47 | 6.50 | 3.98 | 9.00  | 9.00  | VB190M * |
| 6"     | 5.91 | 29.53 | 21.17 | 10.83 | 10.98 | 7.24 | 3.74 | 15.50 | 11.00 | VB350M * |
| 8"     | 7.87 | 36.50 | 26.12 | 15.43 | 11.58 | -    | -    | 18.00 | 13.50 | EA575    |

\* Includes Manual Handwheel

# ON/OFF WIRING DIAGRAM - VB030M -VB350M

12V AC/DC, 24V AC/DC & 100-240VAC



# POSITIONER WIRING DIAGRAM - VB030M -VB350M

12V AC/DC, 24V AC/DC & 100-240VAC

